

Brand Guidelines

Dec 2019

Who we are

We are powering actionable weather insights around the world.

Our mission is to help people manage weather related challenges with the best information and insights.

[MicroWeather OS](#) (Operating System) is ClimaCell's platform which connects its insights engine to the ClimaCell API and enable our products to provide delightful experience to our customers.

[MicroWeather Technology Engine](#) is our scientific stack which comprised of our Data, coming from our [Weather of Things™ \(WoT\)](#), and our [MicroWeather Models](#):

- **WAI (Weather for AI) Archive:** the highest resolution historical data sets available on the planet
- **CCL:** our real time, high refresh rate, current condition models
- **NowCasting:** our short term, minute-by-minute forecast
- **CBAM:** ClimaCell Bespoke Atmospheric Model, AKA
- ClimaCell Bad Ass Model - our NWP platform

ClimaCell Org

“Weather can drive people into poverty. Knowing the weather can lift them out”

ClimaCell.Org is an independent non-profit organization focused on rapidly bringing novel weather solutions to low-income countries, in collaboration with local governments and partners.

We aim to close the global weather gap by 2025, making sure each person on the planet has access to useful weather information.

We focus on:

- **Capacity building** - closing the huge gap in meteorological infrastructure using new innovative technologies, 10x faster and at 10th of the cost.
- **Fostering usage** - working in partnership with local last-mile solution providers in domains including smallholder farming, disaster mitigation, disease migration and more.
- **Research and education** - advance knowledge about generation and use of advanced weather data to ensure long-lasting impact in local communities.

LOGO

Our Logo



Icon



climacell

Full Logo

POWERED BY  climacell

Powered by ClimaCell



climacell

So you can take control

Full logo with tagline

Logo Spacing



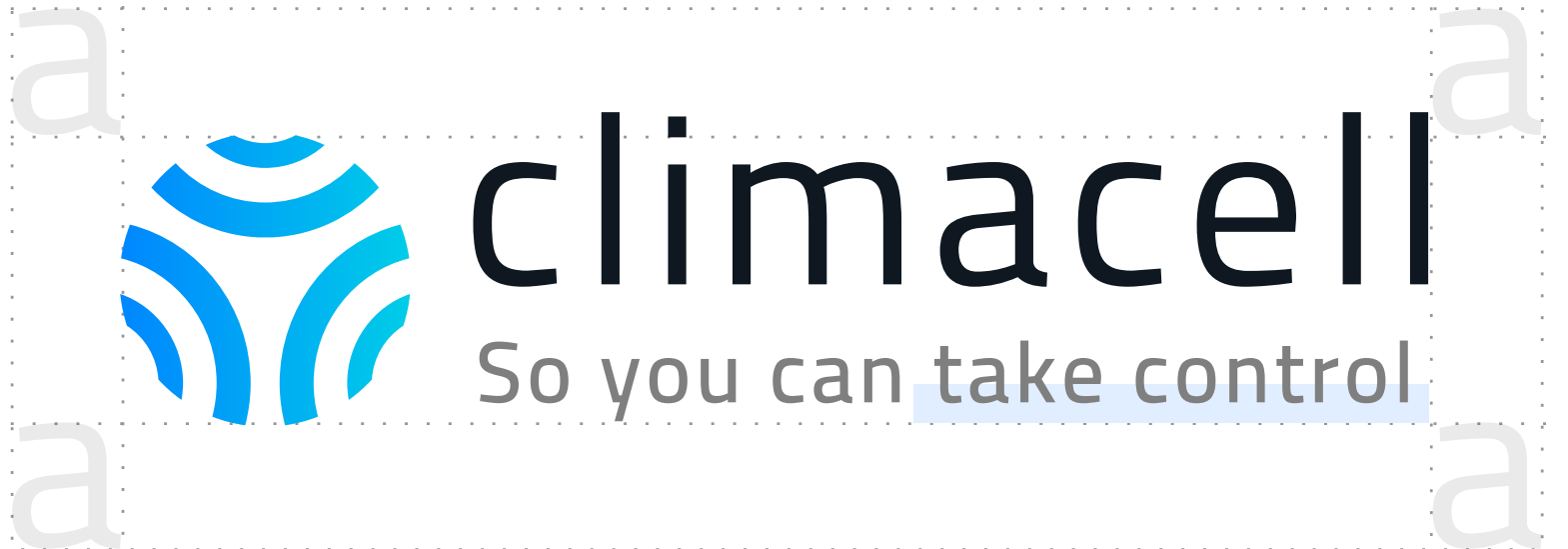
Icon



Full Logo



Powered by Climacell



Full logo with tagline

LOGO

Full Logo Uses



White/light colored backgrounds

- Colored icon
- Black wordmark



Blue background

- White icon
- White wordmark



Dark background

- Colored icon
- White wordmark



Images

- White icon
- White wordmark

LOGO

Logo & Tagline Uses



White/light colored backgrounds

- Colored icon
- Black wordmark



Blue background

- White icon
- White wordmark



Dark background

- Colored icon
- White wordmark

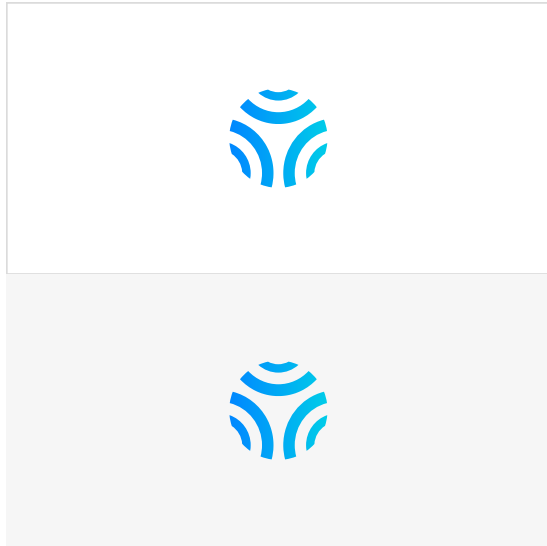


Images

- White icon
- White wordmark

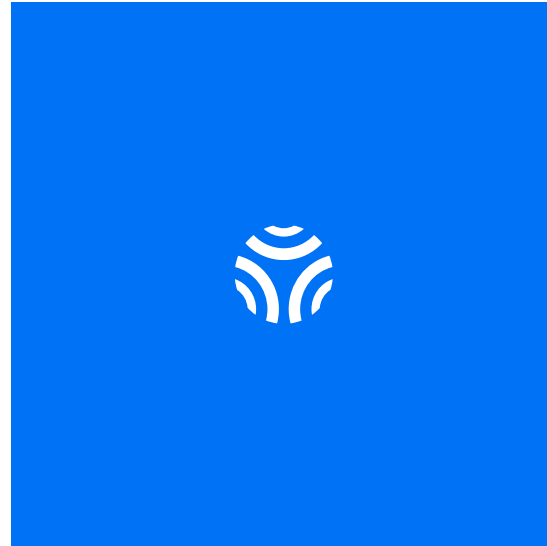
LOGO

Icon Uses



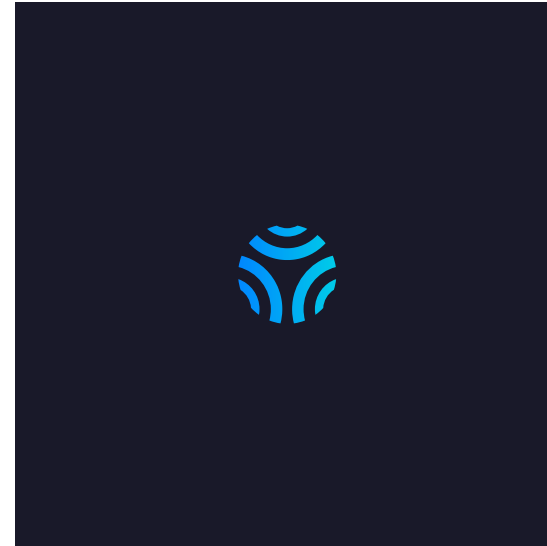
White/light colored backgrounds

Colored icon



Blue background

White icon



Dark background

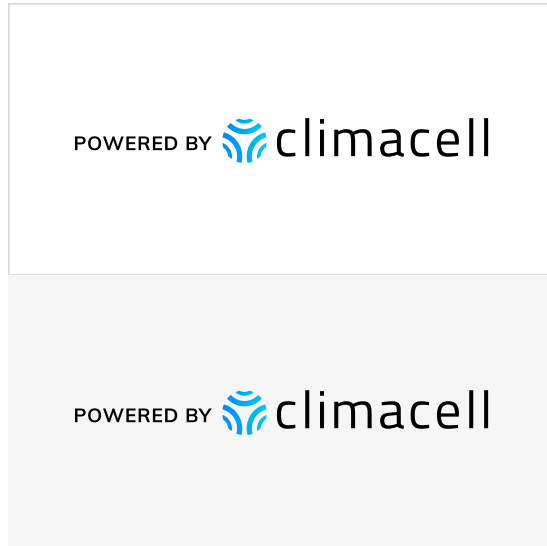
Colored icon



Images

White icon

Powered by ClimaCell Uses



White/light colored backgrounds

- Colored icon
- Black wordmark



Blue background

- White icon
- White wordmark



Dark background

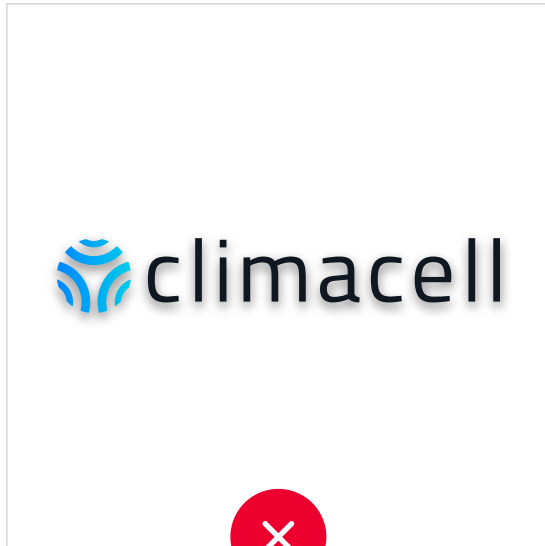
- Colored icon
- White wordmark



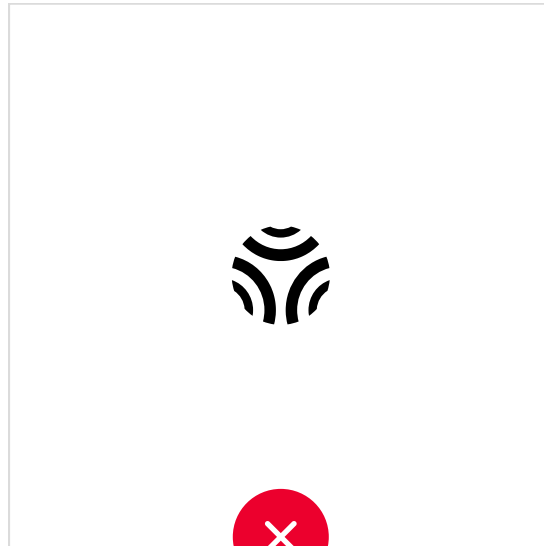
Images

- White icon
- White wordmark

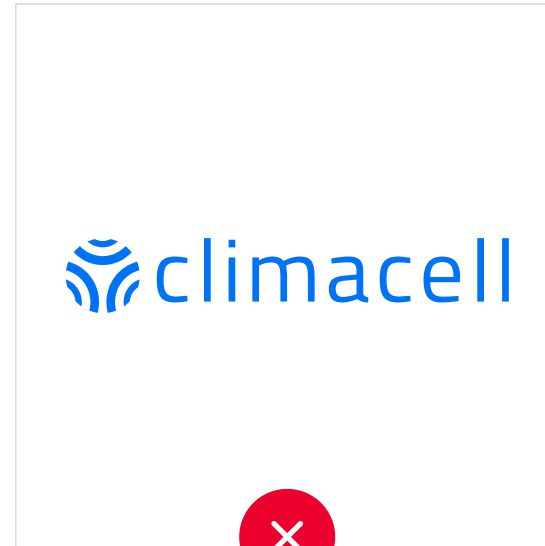
How not to use the logo



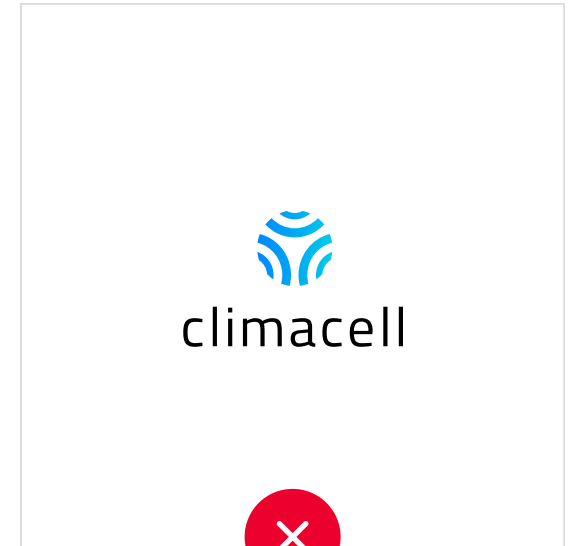
Don't put shadow under the logo



Don't use a black icon



Don't use the logo in other colors



Don't use a different layout

Our Typeface

Our typeface is Muli.

It can be downloaded from Google Fonts:

[https://fonts.google.com/specimen/Muli?
selection.family=Muli](https://fonts.google.com/specimen/Muli?selection.family=Muli)

Muli

Muli Black

**Aa Bb Cc Dd Ee Ff Gg Hh Ii Jj Kk Ll Mm Nn Oo Pp Qq Rr
Ss Tt Uu Vv Ww Xx Yy Zz 0123456789**

Muli Bold

**Aa Bb Cc Dd Ee Ff Gg Hh Ii Jj Kk Ll Mm Nn Oo Pp Qq Rr Ss
Tt Uu Vv Ww Xx Yy Zz 0123456789**

Muli Regular

Aa Bb Cc Dd Ee Ff Gg Hh Ii Jj Kk Ll Mm Nn Oo Pp Qq Rr Ss Tt
Uu Vv Ww Xx Yy Zz 0123456789

Muli Light

Aa Bb Cc Dd Ee Ff Gg Hh Ii Jj Kk Ll Mm Nn Oo Pp Qq Rr Ss Tt
Uu Vv Ww Xx Yy Zz 0123456789

Muli Black

Headings, links

**It's time for
MicroWeather!**

Who needs MicroWeather?

[Learn more >](#)

Muli Bold

Buttons, highlights

Contact Us

Muli Regular

Paragraphs

Dr. Peffers brings over 18 years of experience as an active-duty service member, a civil servant for the USAF, the Chief Scientists for a DoD contractor, an adjunct professor of Meteorology for Embry Riddle Aeronautical University's Worldwide Campus and now as SVP of ClimaCell's Numerical Weather Prediction (NWP) division. Dr. Peffers earned his Ph.D. in Atmospheric Science in collaboration with the U.S. Air Force Technical Applications Center (AFTAC).

Muli Light-Italic

Quotes, testimonials



Weather is a common source of delay for construction projects and a huge safety concern. ClimaCell's integration with Procore allows for real-time access to hyper-local weather information.

SAMANTHA JOURNEY

Business Development Manager, Procore Technologies

COLORS

Our Colors

Blue and friendly colors.

Primary Blue



#0072F5

Secondary Colors



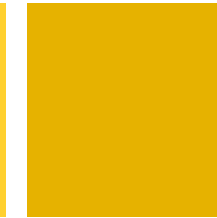
#2A2A45



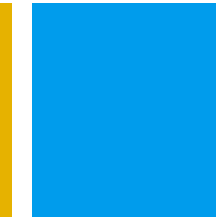
#4D4D4D



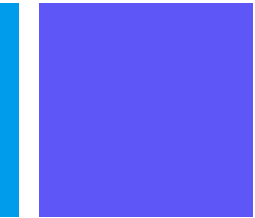
#FFD02F



#E6B200

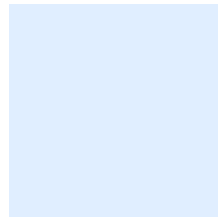


#009CEC

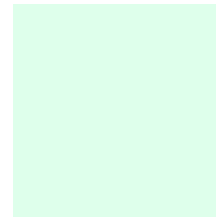


#5E56F7

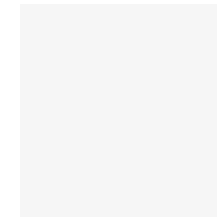
Light Background Colors



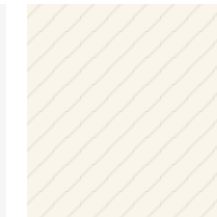
#E0EEFF



#DEFFEB



#F6F6F6



#F9F5EB

COLORS

Colors by Product

Any combination of colors should be used together with our primary blue.

B2B - HyperCast



#191929

#212136

#2A2A45

#393952

#1EB007

#EC002D

B2C - Weather Assistant



#FFD02F

#03CF85

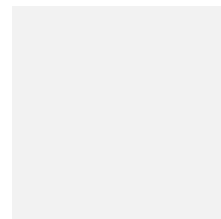
#3391FF

#D5DEE8

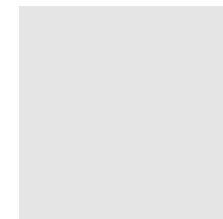
#7597BD



#E6B200



#F2F2F2

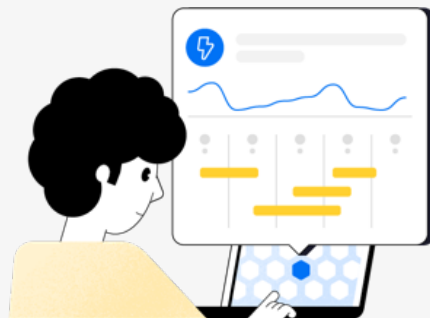
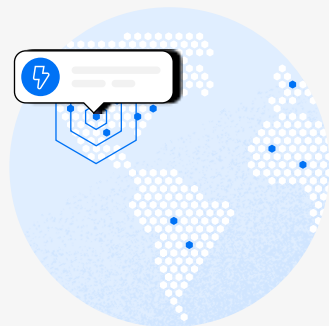
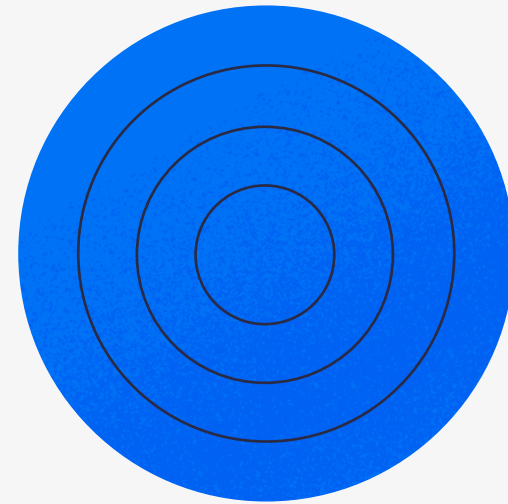
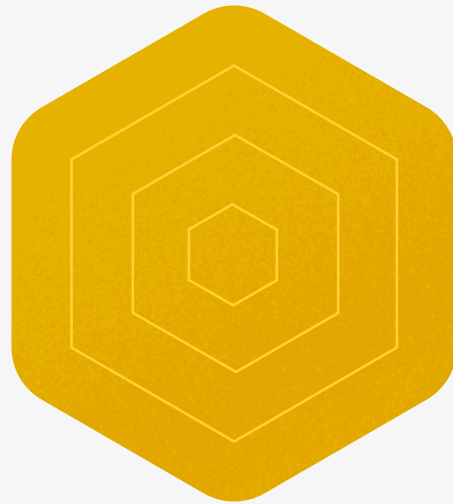
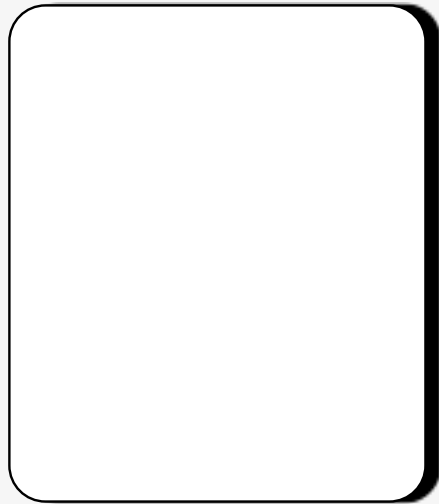


#E5E5E5

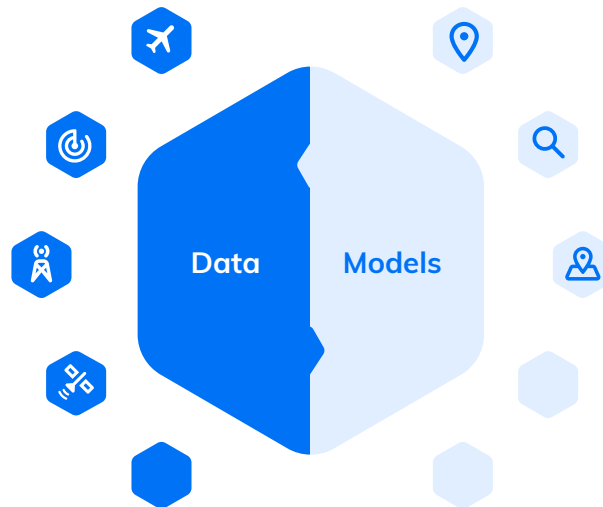
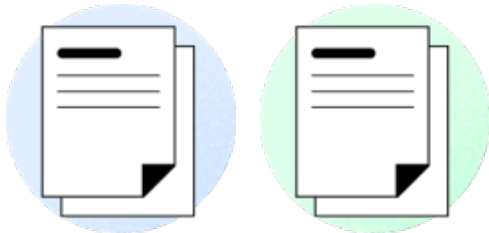


#7F7F7F

Shapes and Patterns

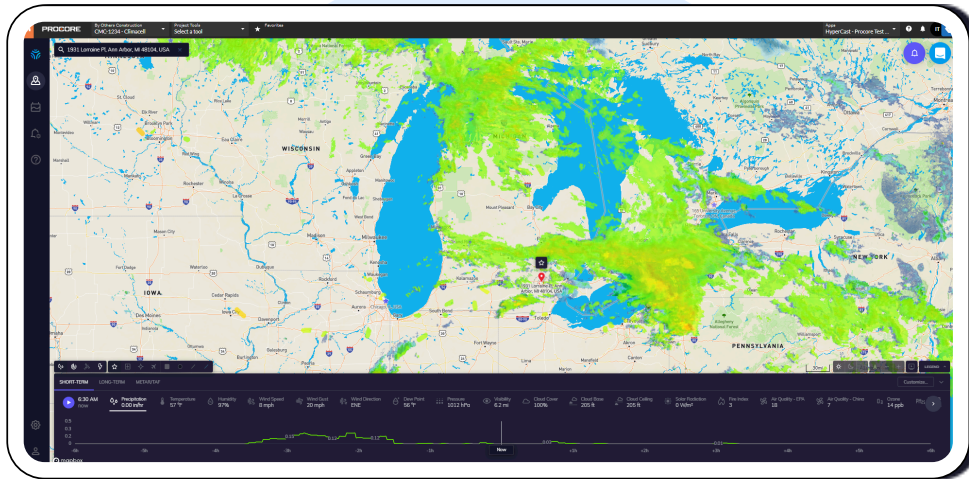


Shapes and Patterns



Our Product Imagery

Can be used with or without the rounded hexagon shape.
Inside a device or a rounded frame with shadow.

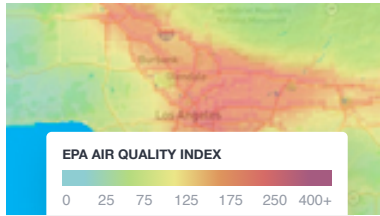
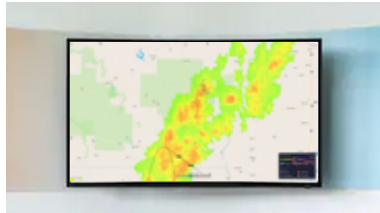


B2B - HyperCast



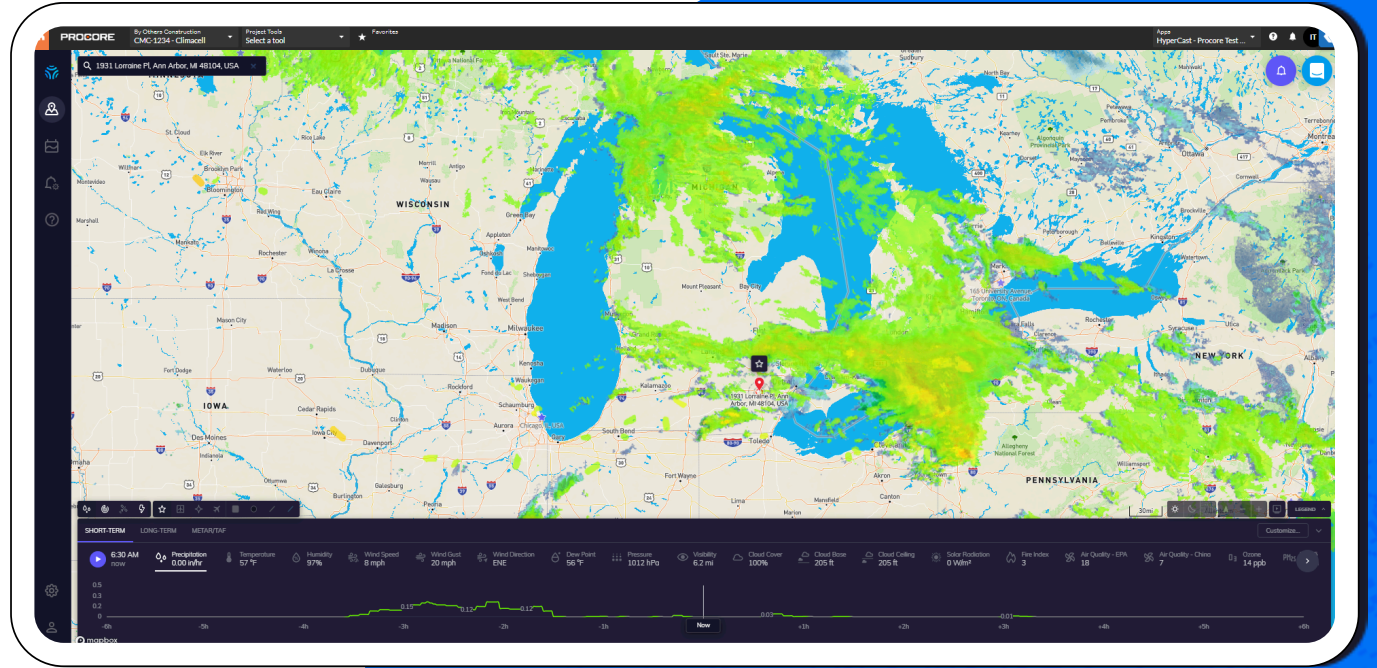
B2C Product

Our Product Imagery



Track The Weather Days Ahead

climacell



B2B - HyperCast